

Title : Ydoc - Data & Diag download

Date : Dec 2022

Version : 1.0

Author : Your Data Our Care

1 TABLE OF CONTENTS

1	TABLE OF CONTENTS	1
1.1	Version history	1
2	INTRODUCTION	2
2.1	Download data and diagnostic messages	2
2.2	System requirements	2
3	Set up your data logger	3
4	Data & diagnostic messages download	4

1.1 Version history

- 2022/12/16 (1.0): First version.

2 INTRODUCTION

2.1 Download data and diagnostic messages

When experiencing problems or other behaviour than expected from your data logger, YDOC can ask for an export from data logger and diagnostic messages for investigation.

Connect a USB cable to the data logger, start ydoc terminal, you should be able to download data and messages from the SD card, in a given time interval.

When downloaded, you can send the data /logfile to your distributor or engineering.

2.2 System requirements

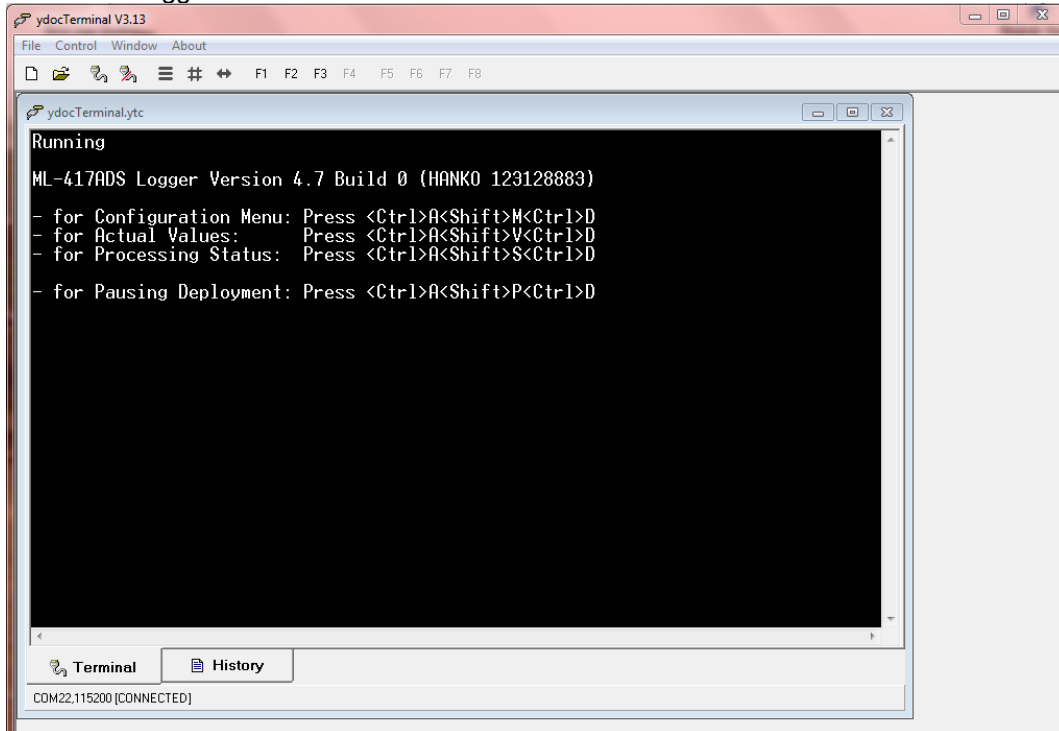
- Microsoft Windows 2012, 2019, W7, W8, W10 or W11 with ydoc terminal installed.
- Access to the data logger PCB.
- An USB "A" type wire.
- You will receive an e-mail address from your distributor or engineering when asked to send logging.
- ...

3 Set up your data logger

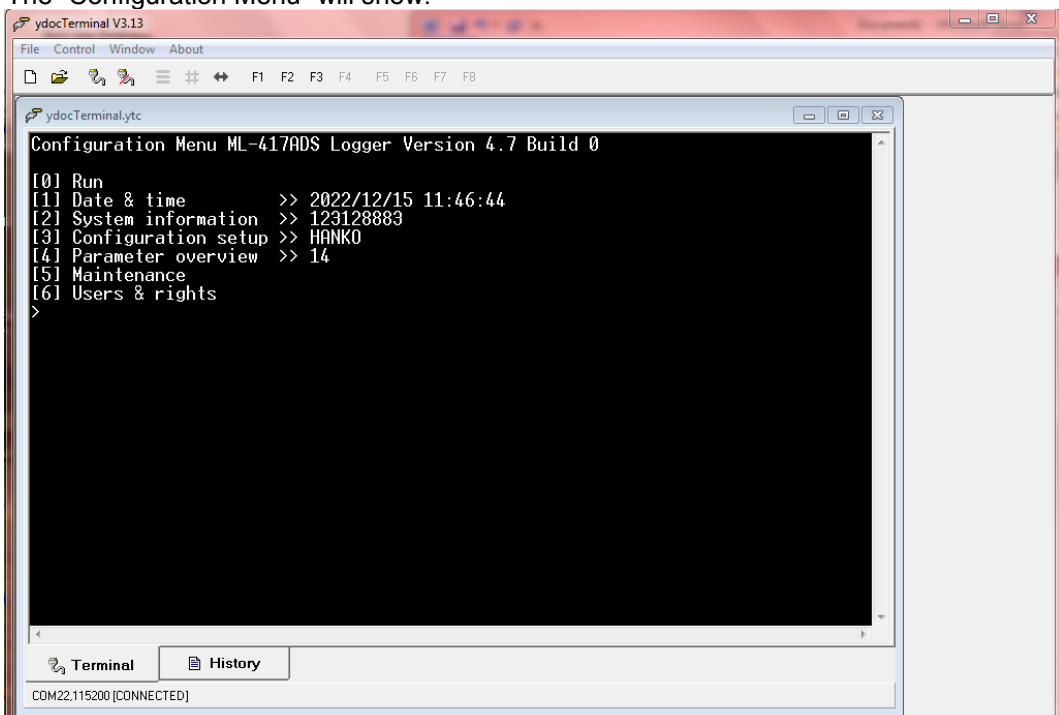
- 1) Open your data logger housing.
Warnings: Open the data logger housing in a dry environment. Use a Philips screw driver. Avoid touching the PCB directly by your fingers. Always handle the USB cable /connector with care. Never use brute force to open the data logger or connect the USB cable.
- 2) Set up a Windows laptop or PC with installed ydoc terminal.
If you don't have a laptop or PC with ydoc terminal available, install it. To download and install ydoc terminal, check the "download" website and "manuals" pages on www.ydoc.biz. Use the manual "installing ydoc terminal" to install it.
- 3) Connect the USB cable to the data logger and laptop or PC.

4 Data & diagnostic messages download

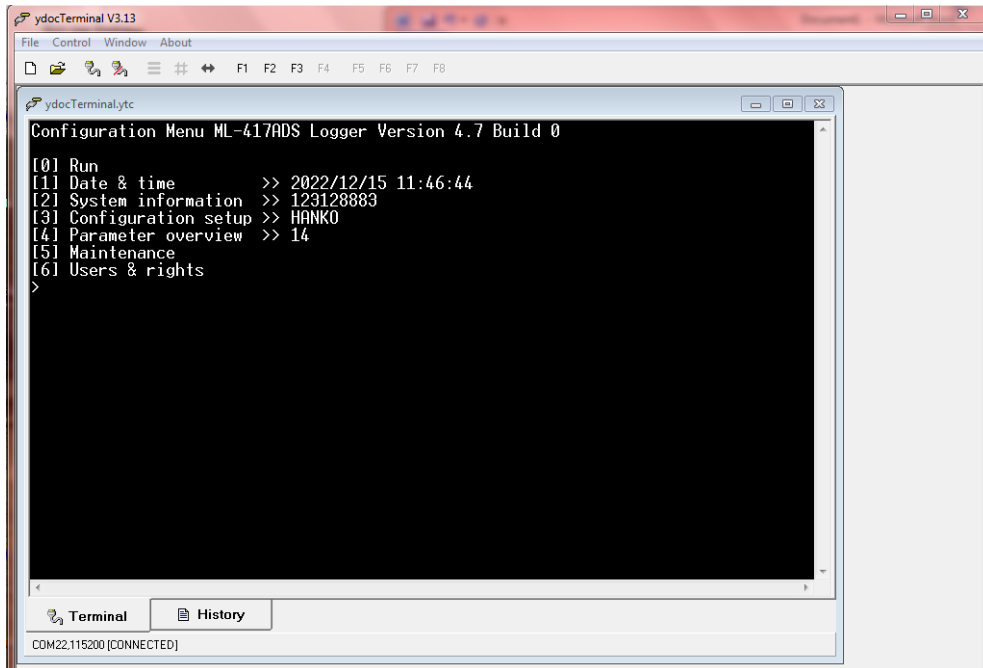
- 1) Start an ydoc terminal session.
- 2) The "Data Logger Main Screen" will show when connected:



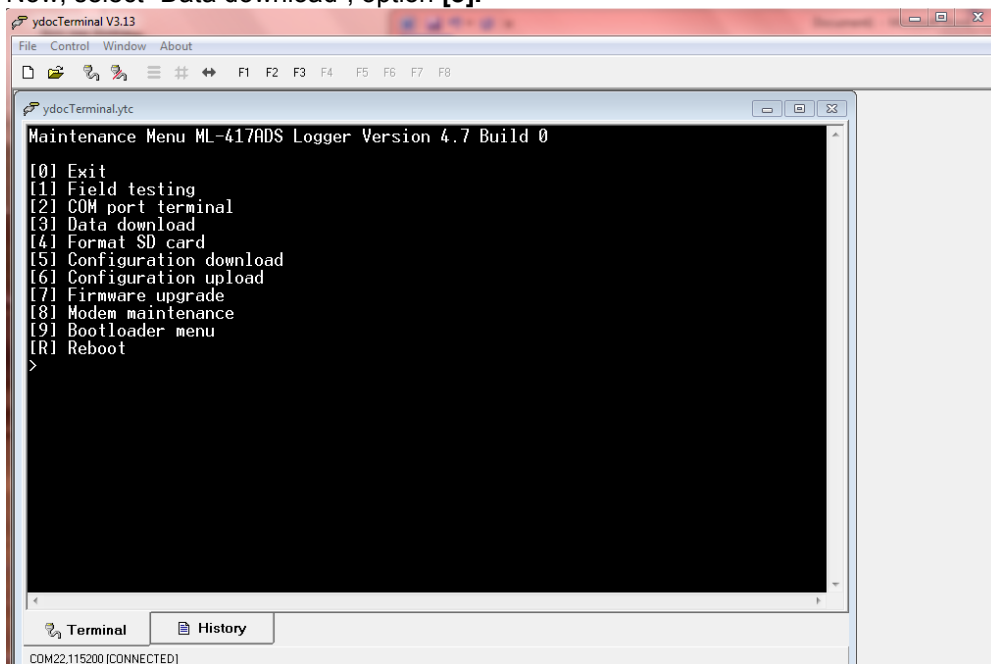
- 3) Enter the configuration menu using the three horizontal line button or point your mouse anywhere in the <Ctrl>A<Shift>M<Ctrl>D string and click left, or enter the string using your keyboard.
- 4) The "Configuration Menu" will show:



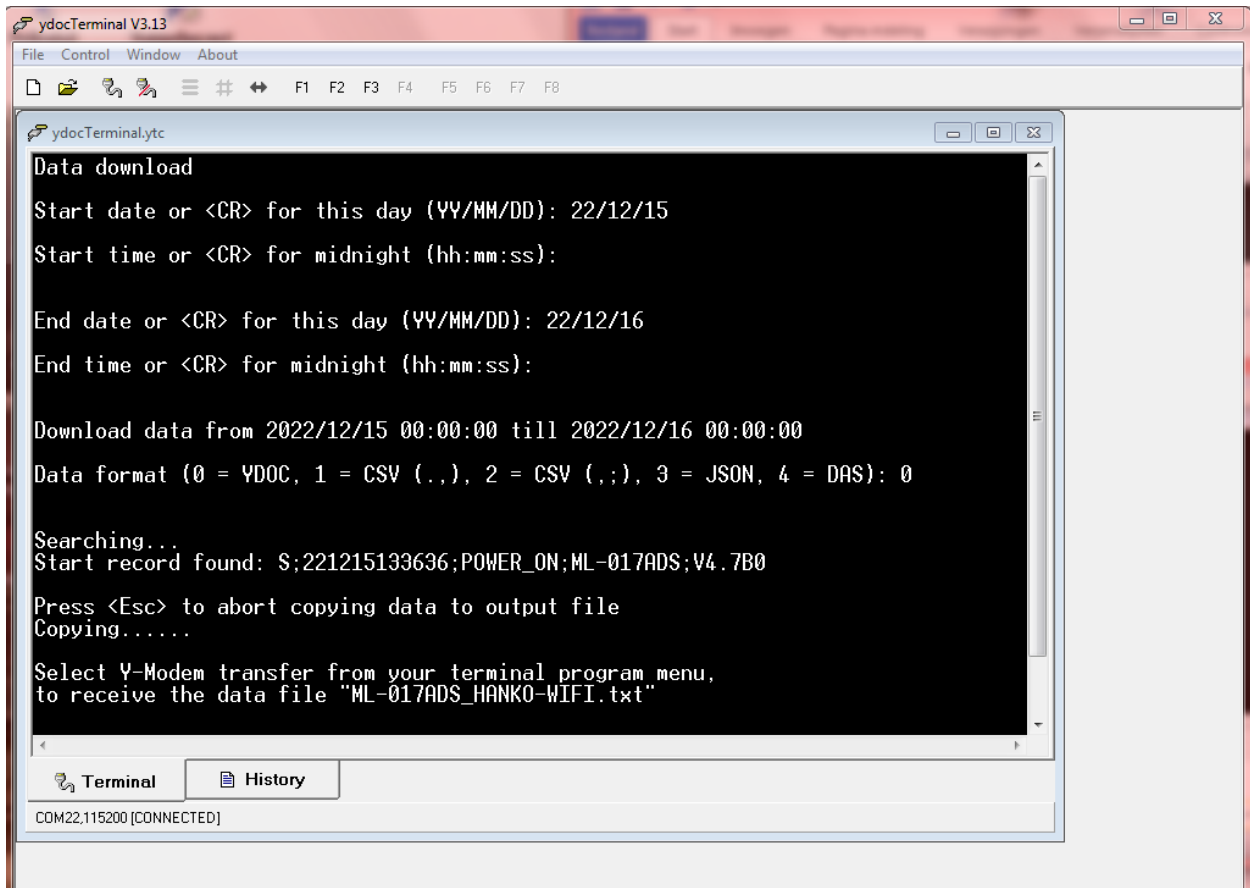
- 5) Select “Maintenance”, option **[5]**, the maintenance screen will show.



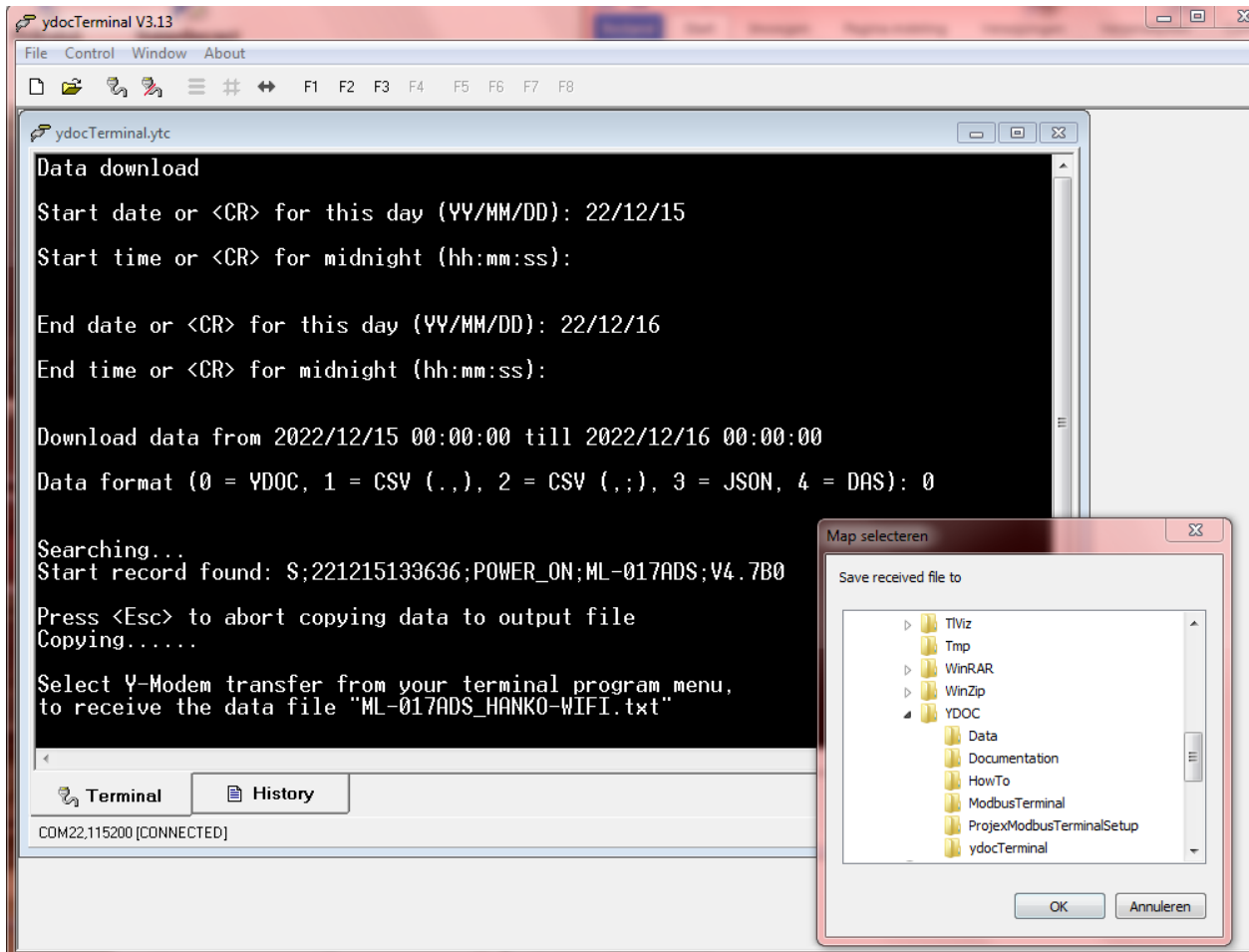
- 6) Now, select “Data download”, option **[3]**.



- 7) Fill in the Start date and time.
In the screen shot: 22/12/15 filled in, and the default start time, midnight, is chosen 00:00:00.
- 8) Fill in the End date and time.
In the screen shot: 22/12/16 filled in, and the default end, midnight, is chosen 00:00:00.
- 9) Now select YDOC data format, option **[0]**.
This will generate a plain text format file, with all the diagnostic messages added to the data in the file.

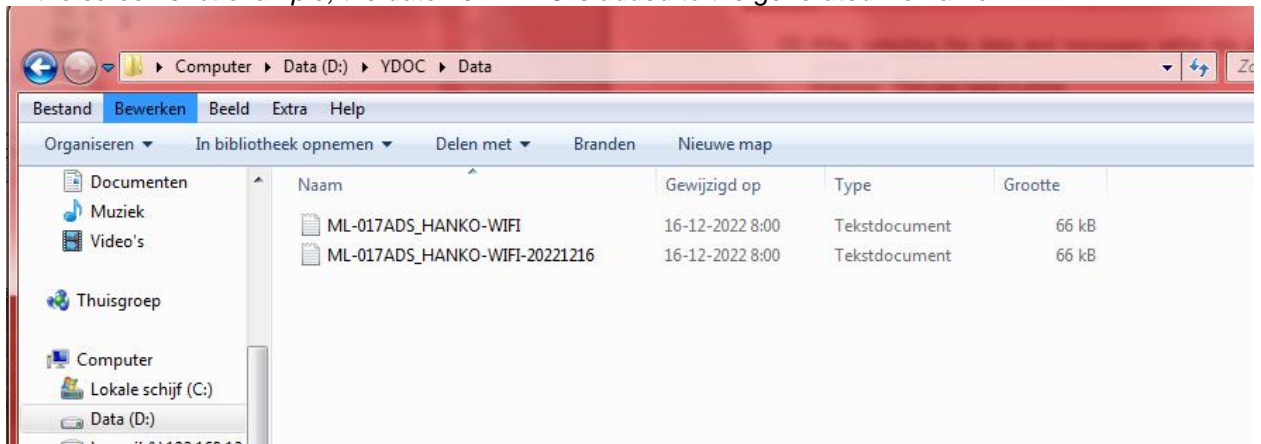


- 10) To store the file, point with your mouse to a directory in the pop-up screen, it will be light blue highlighted.
- 11) Press the [OK] button in the pop-up screen.



- 12) After selecting the data and messages within the given interval, the file will be created in the directory.
Warning: This can take a while.
- 13) The download can be interrupted by pressing <Esc>.
Warning: The result of using abort is that no data file will be available in the chosen directory.

- 14) Find the created file and use copy /paste to add a date string to the file.
*The data logger type and data logger name are included in the file name.
In the screen shot example, the date 20221216 is added to the generated file name.*



- 15) Transfer the file to your ydoc distributor or engineering, using the provided e-mail address.